

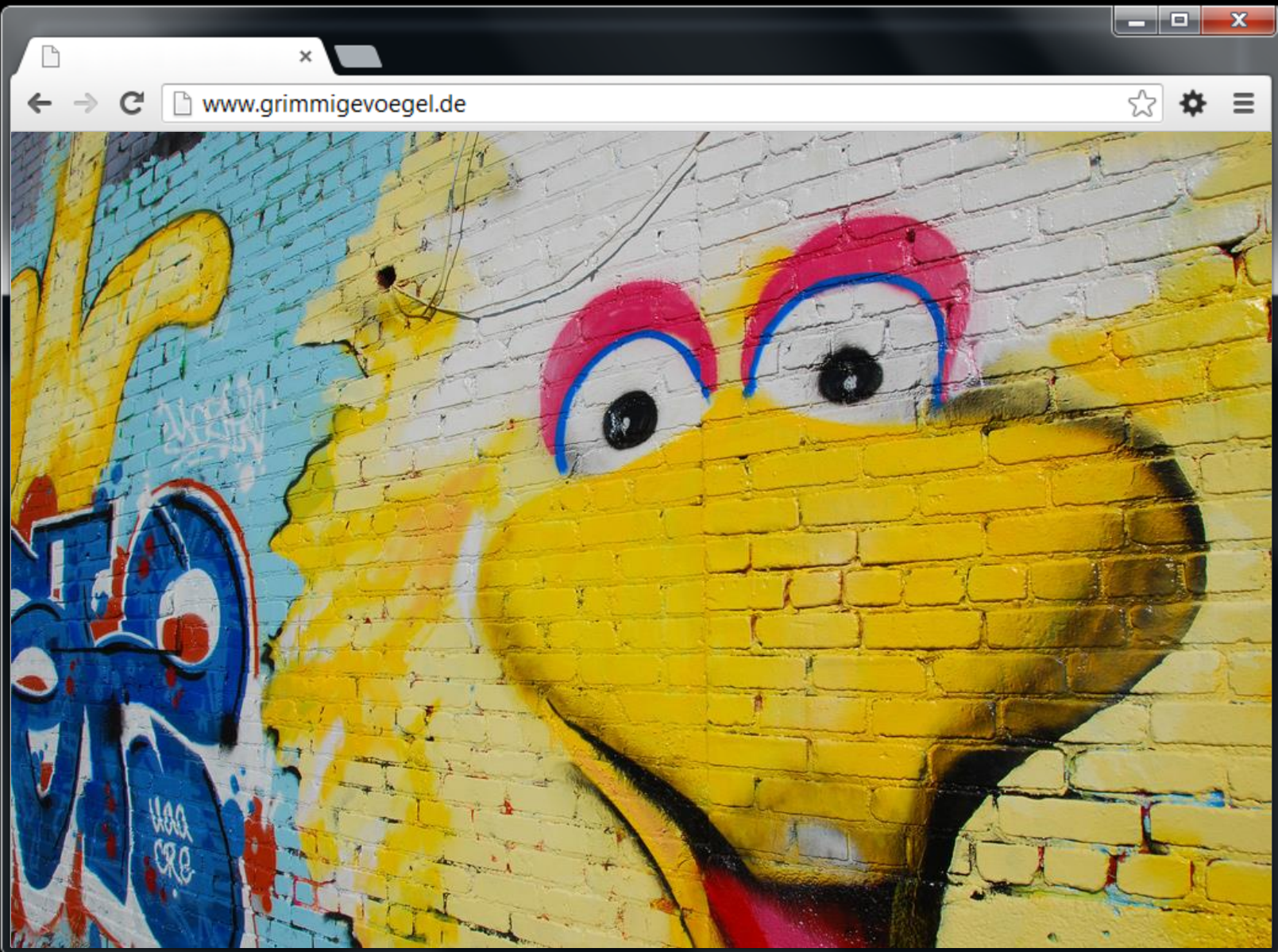
Logs live und in Farbe -  
statt nur schwarzweiß

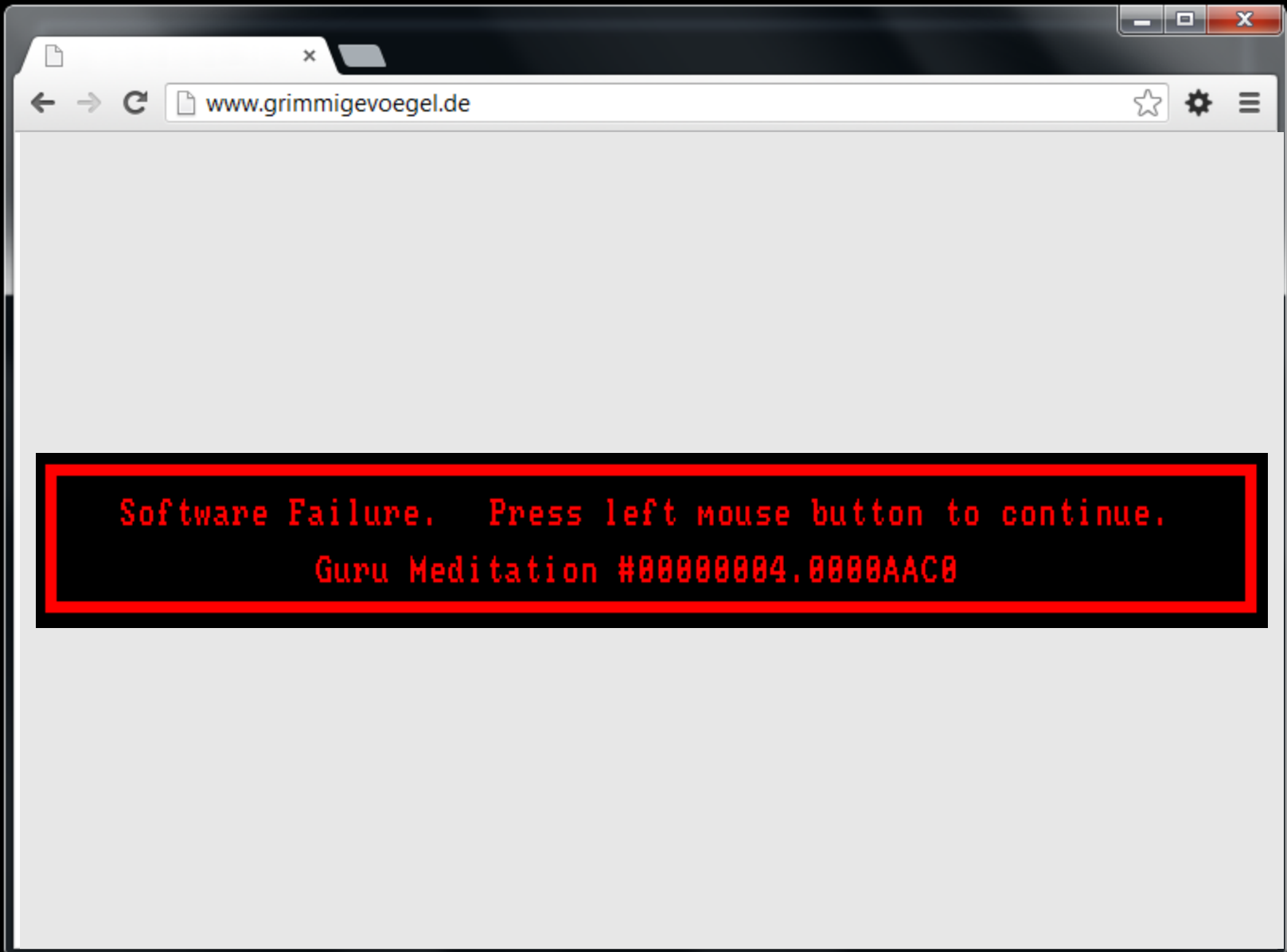
pecha kucha  
[pe-chahk-cha]

Alexander Schwartz

msg systems ag

Entwicklertag KA - 21.05.2014





```
$ tail -f app.log
```

```
$ mail admin@it-ops
```

```
3,433 INFO [stdout] (MSC service thread 1-6) 00:02:13,433 INFO [stdout] (MSC service thread 1-6) references
3,436 INFO [stdout] (MSC service thread 1-6) Hibe 00:02:13,436 INFO [stdout] (MSC service thread 1-6) Hibernate:
3,436 INFO [stdout] (MSC service thread 1-6) 00:02:13,436 INFO [stdout] (MSC service thread 1-6) alter table Ves
3,437 INFO [stdout] (MSC service thread 1-6) 00:02:13,437 INFO [stdout] (MSC service thread 1-6) add constr
860E56D6B8E0F8
3,437 INFO [stdout] (MSC service thread 1-6) 00:02:13,437 INFO [stdout] (MSC service thread 1-6) foreign key
Name)
3,438 INFO [stdout] (MSC service thread 1-6) 00:02:13,438 INFO [stdout] (MSC service thread 1-6) references
3,444 INFO 00:02:13,432 INFO [stdout] (MSC service thread 1-6) foreign key (tran hbm2ddl.SchemaExport] (MSC serv
HHH000230: S ationId)
3,500 INFO 00:02:13,433 INFO [stdout] (MSC service thread 1-6) references Transl oyer] (MSC service thread 1-2) J
ing weld se ion rest-samples.war
3,764 INFO 00:02:13,436 INFO [stdout] (MSC service thread 1-6) Hibernate: fig.xml.bootstrap.XmlConfigExten
3,764 INFO 00:02:13,436 INFO [stdout] (MSC service thread 1-6) alter table Vessel iver starting...
3,768 INFO 00:02:13,437 INFO [stdout] (MSC service thread 1-6) add constraint FK fig.xml.bootstrap.XmlConfigExten
860E56D6B8E0F8 entProvider: org.jboss.solder.co
3,786 INFO 00:02:13,437 INFO [stdout] (MSC service thread 1-6) foreign key (vess fig.xml.bootstrap.XmlConfigExten
Name) ider
3,786 INFO 00:02:13,438 INFO [stdout] (MSC service thread 1-6) references Transl fig.xml.bootstrap.XmlConfigExten
3,796 INFO 00:02:13,444 INFO [org.hibernate.tool.hbm2ddl.SchemaExport] (MSC service thre sion] (MSC service thread 1-2)
1-6) HHH000230: Schema export complete
00:02:13,500 INFO [org.jboss.weld.deployer] (MSC service thread 1-2) JBAS0160 : service thread 1-2) Catch Inte
: Starting weld service for deployment rest-samples.war
00:02:13,764 INFO [org.jboss.solder.config.xml.bootstrap.XmlConfigExtension] (MSC service thread 1-2) JBAS018210:
SC service thread 1-2) Solder Config XML provider starting... service thread 1-2) JBAS018210:
00:02:13,768 INFO [org.jboss.solder.config.xml.bootstrap.XmlConfigExtension] (MSC service thread 1-2) Loading XmlDocumentProvider: org.jboss.solder.config.xml
SC service thread 1-2) Loading XmlDocumentProvider: org.jboss.solder.config.xml bootstrap.ResourceLoaderXmlDocumentProvider
00:02:13,786 INFO [org.jboss.solder.config.xml.bootstrap.XmlConfigExtension] (MSC service thread 1-6) Hibernate:
SC service thread 1-2) Reading XML file: vfs:/D:/workspace/rest-samples/content rest-samples.war/WEB-INF/beans.xml service thread 1-6) alter tab
00:02:13,796 INFO [org.jboss.solder.Version] (MSC service thread 1-2) Solder service thread 1-6) add c
1.1.Final (build id: 3.1.1.Final)
00:02:16,919 INFO [solder-servlet] (MSC service thread 1-2) Catch Integration service thread 1-6) forei
or Servlets enabled service thread 1-6) refer
00:02:16,949 INFO [org.jboss.web] (MSC service thread 1-2) JBAS018210: Regist service thread 1-6) refer
ing web context: /rest-samples
00:02:17,128 INFO [org.jboss.as.server] (management-handler-thread - 4) JBAS0 tool.hbm2ddl.SchemaExport] (MSC
559: Deployed "rest-samples.war" plete
. starting weld service for deployment rest-samples.war
00:02:13,433 INFO [stdout] (MSC service 00:02:13,764 INFO [org.jboss.solder.config.xml.bootstrap.XmlConf
ion SC service thread 1-2) Solder Config XML provider starting...
00:02:13,436 INFO [stdout] (MSC servic 00:02:13,768 INFO [org.jboss.solder.config.xml.bootstrap.XmlConf
00:02:13,436 INFO [stdout] (MSC servic SC service thread 1-2) Loading XmlDocumentProvider: org.jboss.sold
00:02:13,437 INFO [stdout] (MSC servic bootstrap.ResourceLoaderXmlDocumentProvider
860E56D6B8E0F8 00:02:13,786 INFO [org.jboss.solder.config.xml.bootstrap.XmlConf
00:02:13,437 INFO [stdout] (MSC servic SC service thread 1-2) Reading XML file: vfs:/D:/workspace/rest-sa
Name) rest-samples.war/WEB-INF/beans.xml
00:02:13,438 INFO [stdout] (MSC servic 00:02:13,796 INFO [org.jboss.solder.Version] (MSC service thread
ion 1.1.Final (build id: 3.1.1.Final)
00:02:13,444 INFO [org.hibernate.tool. 00:02:16,919 INFO [solder-servlet] (MSC service thread 1-2) Catch
1-6) HHH000230: Schema export complete or Servlets enabled
00:02:13,500 INFO [org.jboss.weld.depl 00:02:16,949 INFO [org.jboss.web] (MSC service thread 1-2) JBAS01
: Starting weld service for deployment ing web context: /rest-samples
00:02:13,764 INFO [org.jboss.solder.co 00:02:17,128 INFO [org.jboss.as.server] (management-handler-threa
SC service thread 1-2) Solder Config XM 559: Deployed "rest-samples.war"
```

# Buzzword Bingo



{ Idap }



**Fehler-  
sammler**



**Event  
Analytics**



**App  
Logging**



Fehlersammler

# Errbit

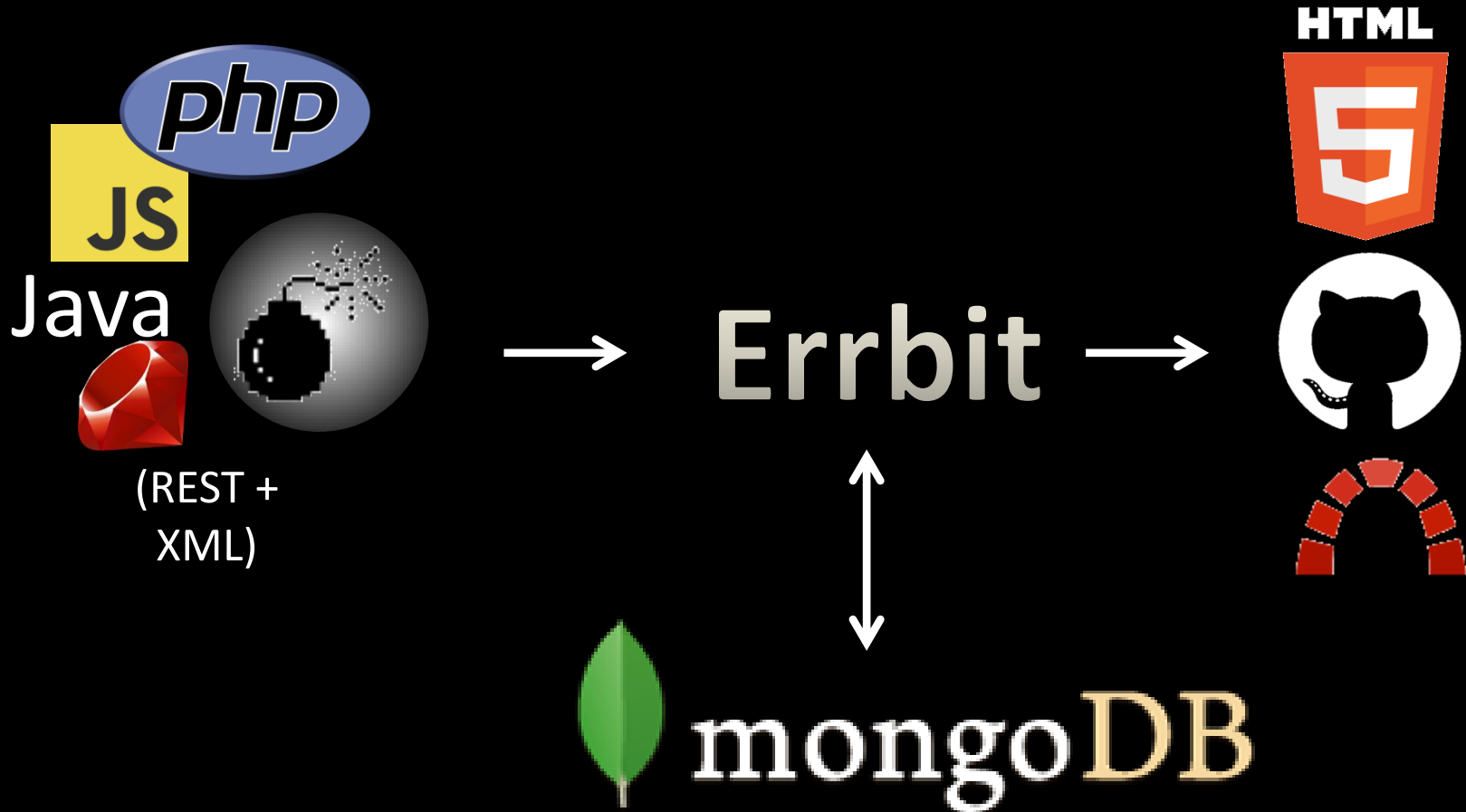


open source

Clone von:  Airbrake.io



# Big Picture



# Errbit Workspace

## Unresolved Errors

show resolved

Search for issues

<input type="checkbox"/>	APP	WHAT & WHERE	LATEST ↑	DEPLOY	COUNT	RESOLVE
<input type="checkbox"/>	Hello World production	My Exception xy <i>com.msgsystems.gbl.technology.errbit.LogExceptionTest</i>	8 minutes ago	n/a	1	
<input type="checkbox"/>	Hello World development	My Message <i>com.msgsystems.gbl.te</i>				
<input type="checkbox"/>	Hello World development	My Exception xy <i>com.msgsystems.gbl.te</i>				

Merge Unmerge Resolve Unres

## java.lang.Exception

App: Hello World Where: com.msgsystems.gbl.technology.errbit.LogExceptionTest  
Environment: development Last Notice: May 11 20:53:01

resolve

iCal

up

create issue

## My Exception xy

← Older | Newer → viewing occurrence 4 of 4

Summary

Backtrace

Environment

Parameters

Session

```
[unknown source] → Exception java.lang.Exception
/LogExceptionTest.java:13 → com.msgsystems.gbl.technology.errbit.LogExceptionTest.logException
/NativeMethodAccessorImpl.java:-2 → sun.reflect.NativeMethodAccessorImpl.invoke0
/NativeMethodAccessorImpl.java:57 → sun.reflect.NativeMethodAccessorImpl.invoke
...
/RemoteTestRunner.java:467 → org.eclipse.jdt.internal.junit.runner.RemoteTestRunner.runTests
/RemoteTestRunner.java:683 → org.eclipse.jdt.internal.junit.runner.RemoteTestRunner.runTests
/RemoteTestRunner.java:390 → org.eclipse.jdt.internal.junit.runner.RemoteTestRunner.run
/RemoteTestRunner.java:197 → org.eclipse.jdt.internal.junit.runner.RemoteTestRunner.main
```



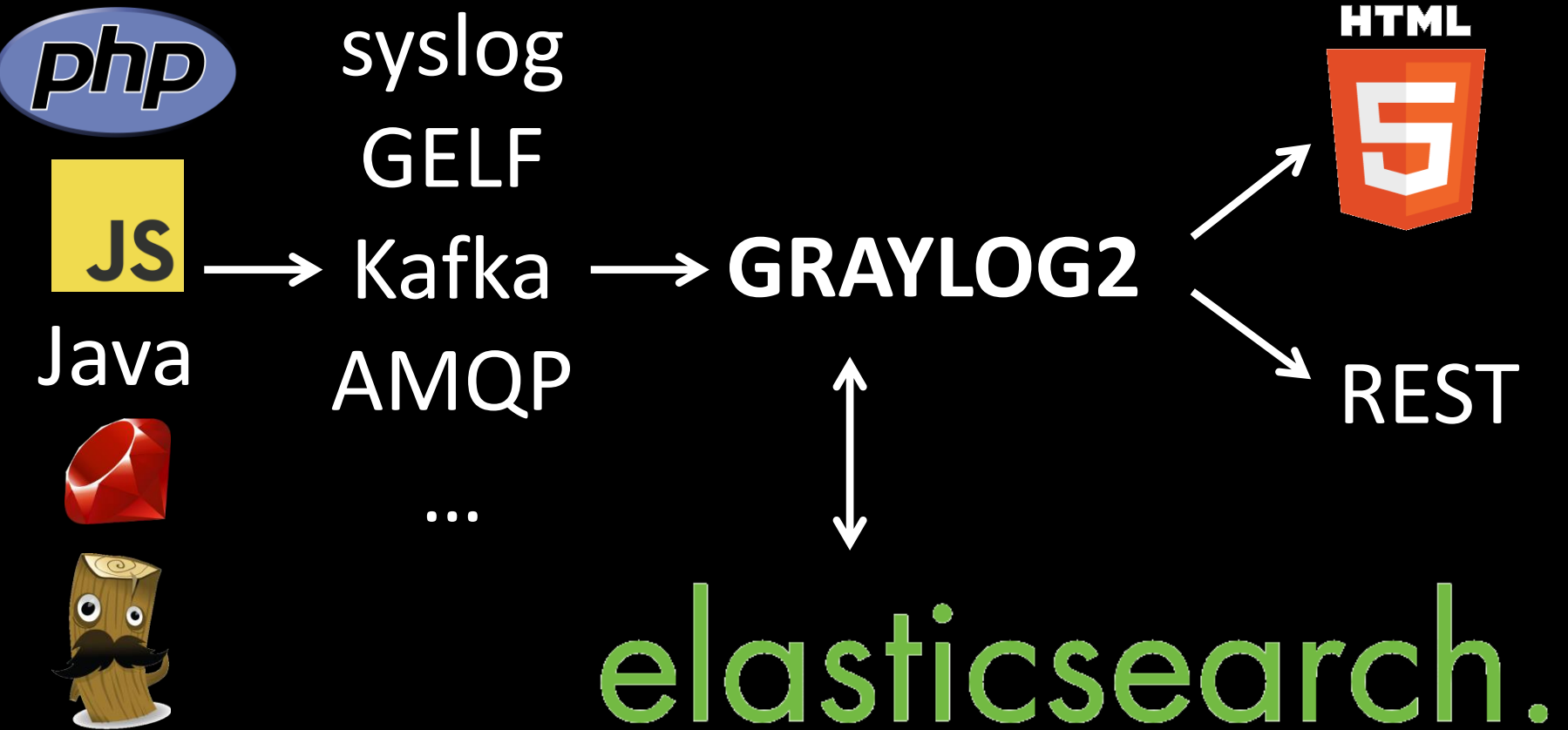
Event Analytics

# GRAYLOG2

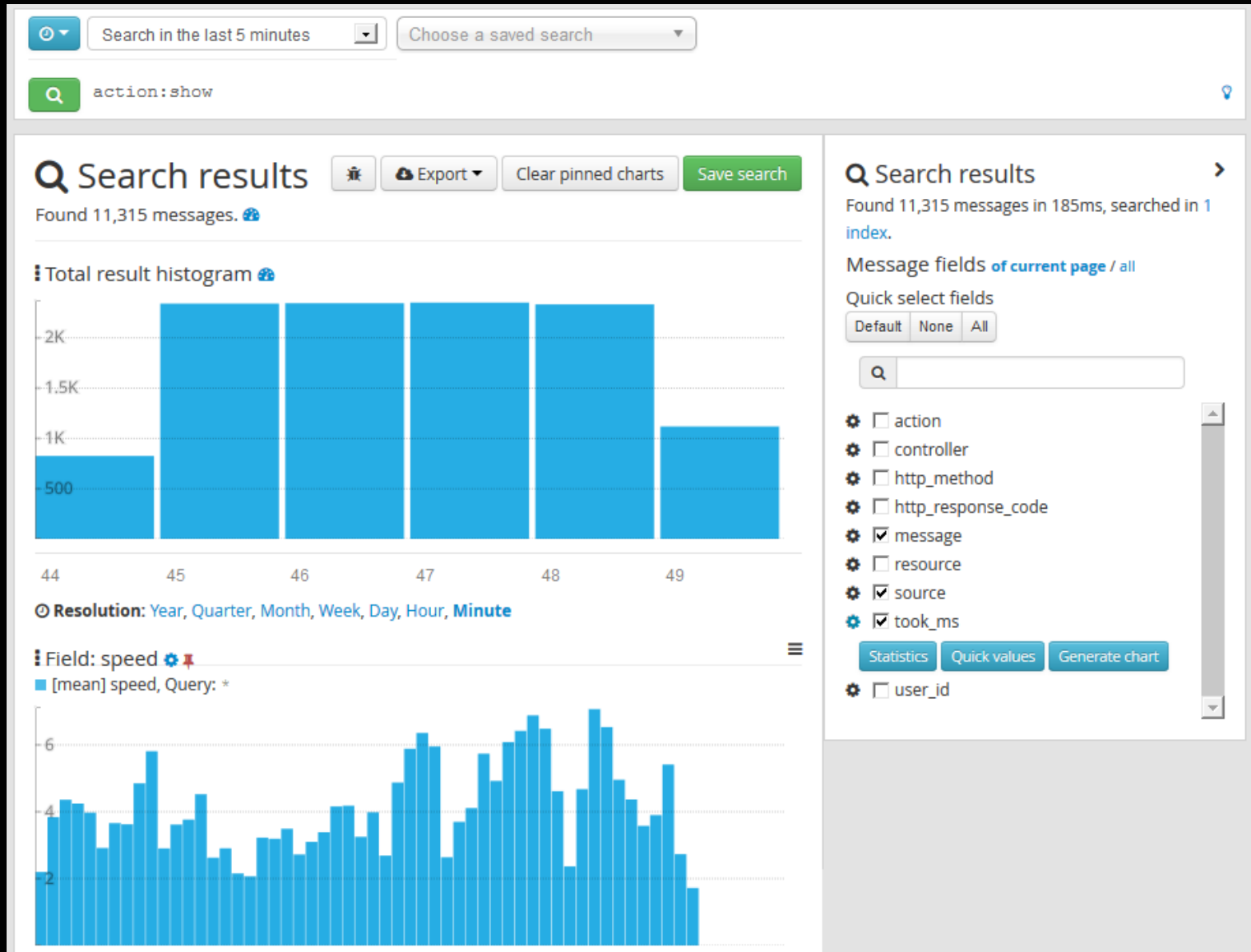


open source

# Big Picture



# GRAYLOG2 Workspace



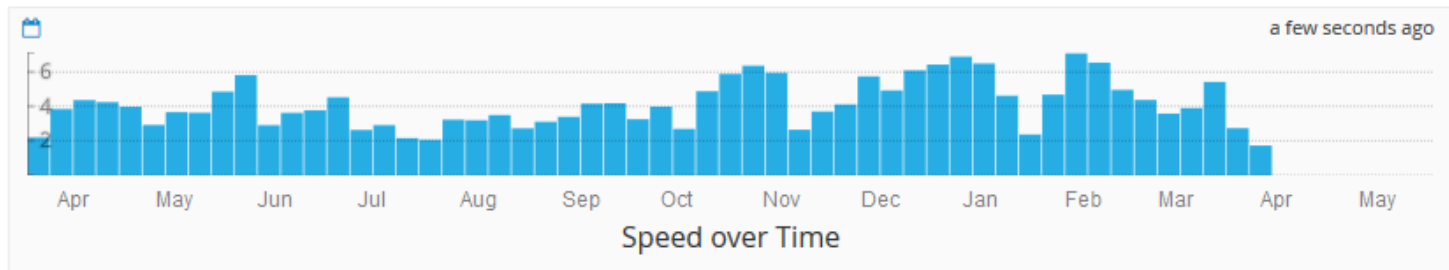
# GRAYLOG2 Dashboard

[Dashboards](#) / [My Dashboard](#)



## My Dashboard

My description (Unlock widget positions by clicking on the lock symbol on the top right. Then drag them to any position you like.)



a few seconds ago

Value	%	Count
3.4	1.82	320
4.3	1.80	316
3.8	1.78	312
3.9	1.77	311
4.0	1.76	309
3.7	1.75	308
3.3	1.74	306
4.2	1.73	304

Values

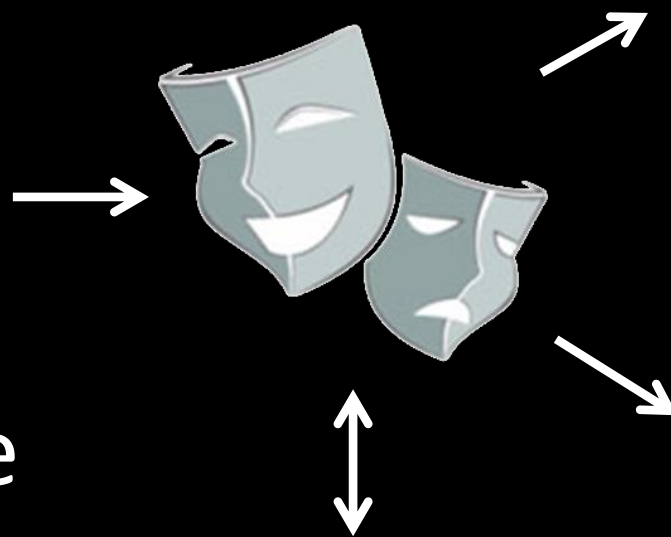


# Anwendungs-Log

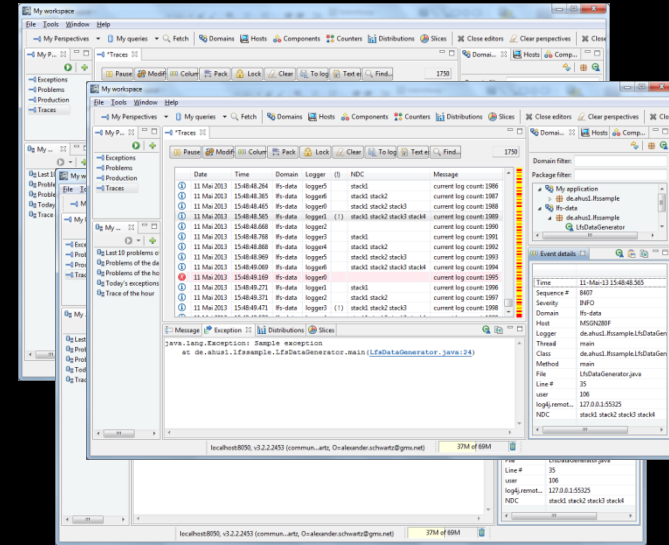


# Big Picture

log4j  
logback  
log4xxx  
Nlog  
syslog  
dropzone



SQL/NoSQL



Java API



# logFaces Workspace

The screenshot displays the logFaces Workspace application. The main window is titled "My workspace" and contains several panels:

- Left Panel:** Contains navigation options like "Exceptions", "Problems", "Production", and "Traces".
- Top Panel:** Includes a menu bar (File, Tools, Window, Help) and a toolbar with various icons for domains, hosts, components, counters, distributions, and slices.
- Center Panel:** A table of log entries with columns: Date, Time, Domain, Logger, (!), NDC, and Message. The table shows a sequence of log messages from "lfs-data" loggers, with the entry at 15:48:49.169 highlighted in red.
- Bottom Panel:** A message viewer showing the details of the selected log entry: `java.lang.Exception: Sample exception` at `de.ahus1.lfssample.LfsDataGenerator.main(LfsDataGenerator.java:24)`.
- Right Panel:** A tree view showing the application structure, including "My application", "de.ahus1.lfssample", "lfs-data", and "LfsDataGenerator". Below it is an "Event details" panel showing fields like Time, Sequence #, Severity, Domain, Host, Logger, Thread, Class, Method, File, Line #, user, log4j.remot..., and NDC.

The status bar at the bottom indicates the connection: `localhost:8050, v3.2.2.2453 (commun...artz, O=alexander.schwartz@gmx.net)` and shows 37M of 69M data.

Date	Time	Domain	Logger	(!)	NDC	Message
11 Mai 2013	15:48:48.264	lfs-data	logger5		stack1	current log count: 1986
11 Mai 2013	15:48:48.365	lfs-data	logger6		stack1 stack2	current log count: 1987
11 Mai 2013	15:48:48.465	lfs-data	logger0		stack1 stack2 stack3	current log count: 1988
11 Mai 2013	15:48:48.565	lfs-data	logger1	(!)	stack1 stack2 stack3 stack4	current log count: 1989
11 Mai 2013	15:48:48.668	lfs-data	logger2			current log count: 1990
11 Mai 2013	15:48:48.768	lfs-data	logger3		stack1	current log count: 1991
11 Mai 2013	15:48:48.868	lfs-data	logger4		stack1 stack2	current log count: 1992
11 Mai 2013	15:48:48.969	lfs-data	logger5		stack1 stack2 stack3	current log count: 1993
11 Mai 2013	15:48:49.069	lfs-data	logger6		stack1 stack2 stack3 stack4	current log count: 1994
11 Mai 2013	15:48:49.169	lfs-data	logger0			current log count: 1995
11 Mai 2013	15:48:49.271	lfs-data	logger1		stack1	current log count: 1996
11 Mai 2013	15:48:49.371	lfs-data	logger2		stack1 stack2	current log count: 1997
11 Mai 2013	15:48:49.471	lfs-data	logger3	(!)	stack1 stack2 stack3	current log count: 1998

Time	11-Mai-13 15:48:48.565
Sequence #	8407
Severity	INFO
Domain	lfs-data
Host	MSGN280F
Logger	de.ahus1.lfssample.LfsDataGen
Thread	main
Class	de.ahus1.lfssample.LfsDataGen
Method	main
File	LfsDataGenerator.java
Line #	35
user	106
log4j.remot...	127.0.0.1:55325
NDC	stack1 stack2 stack3 stack4

# logFaces Trace & Focus

The screenshot displays the logFaces application interface. At the top, there is a toolbar with buttons for Pause, Modify, Column, Pack, Lock, Clear, To log, Text editor, and Find... A search bar on the right shows the number 1750. Below the toolbar is a table with columns: Date, Time, Domain, Logger, (!), NDC, and Message. The table contains multiple rows of log entries. A context menu is open over a row with the message 'current log count: 1974'. The menu items are: Show details, Show source code, Copy to clipboard..., Create tag, Add bookmark, Clear all bookmarks, Focus on events..., Hide events..., Permanently ignore..., Fetch identical events in range of..., What happened before.., What happened after.., What happened in range of.., and Follow in real time... The 'Focus on events...' submenu is also open, showing options: from this domain (lfs-data), from this host (MSGN280F), from this component (), from this logger (logger0), from this thread (main), containing this text..., and where user is '102'. A vertical bar on the right side of the table shows a color-coded status indicator.

Date	Time	Domain	Logger	(!)	NDC	Message
11 Mai 2013	15:48:46.959	lfs-data	logger6		stack1 stack2 stack3	current log count: 1973
11 M	15:48:47.061	lfs-data	logger6		stack1 stack2 stack3 stack4	current log count: 1974
11 M						current log count: 1975
11 M					stack1	current log count: 1976
11 M					stack1 stack2	current log count: 1977
11 M					stack1 stack2 stack3	current log count: 1978
11 M					stack1 stack2 stack3 stack4	current log count: 1979
11 M						current log count: 1980
11 M					stack1	current log count: 1981
11 M					stack1 stack2	current log count: 1982
11 M						current log count: 1983
11 M						current log count: 1984
11 M						current log count: 1985
11 M						current log count: 1986
11 M						current log count: 1987
11 M						current log count: 1988
11 M						current log count: 1989
11 M						current log count: 1990
11 M					stack1	current log count: 1991
11 M					stack1 stack2	current log count: 1992
11 M					stack1 stack2 stack3	current log count: 1993

# logFaces Query

Query

Specify a friendly name for this query:  
My new Query

Specify time range, size limitation and sorting order:  
custom range | no more than 10K records | display in ascending order | [Europe/Berlin](#)  
[11 Mai 2013, 15:27 -- 11 Mai 2013, 16:27](#)  Fetch stack traces

Use this criteria to fetch log data:

Capture log events when:

loggerLevel higher or equals WARN

and hostName is MSGN280F

OR

user is 104

# Nie mehr...



@ahus1de

Errbit: <http://errbit.github.io/errbit>

Graylog2: <http://graylog2.org>

logFaces: <http://www.moonlitsoftware.com>